

## **Cedar Hill Cross Rd between McKenzie Ave and Reynolds Rd**

**November 22, 2020 To November 27, 2020**



The data presented here is for information purposes only and should not be considered authoritative for construction, geotechnical, engineering, navigational, legal, or other site-specific uses. The information shared is owned by the Transportation Division of the Engineering Department at the District of Saanich. Accuracy is not guaranteed.

Start Date: 23-Nov-20  
 Start Time: 19:00  
 Station ID: C0012-01

**Location 1: Cedar Hill Cross Rd between McKenzie Ave and Reynolds Rd**

Note:

DATE:	November 23, 2020		November 24, 2020		November 25, 2020		November 26, 2020		November 27, 2020		WK AVG		WK AVG	HOURLY
	MON		TUE		WED		THURS		FRI		EB	WB	CH 1+2	%
Time:	EB	WB	EB	WB	EB	WB	EB	WB	EB	WB	EB	WB		
12-1 AM	21	4	22	13	19	15	17	15			20	12	32	0.6%
1-2 AM	13	4	8	4	12	6	13	6			12	5	17	0.3%
2-3 AM	4	7	7	6	11	7	5	6			7	7	13	0.3%
3-4 AM	2	1	5	0	3	3	1	3			3	2	5	0.1%
4-5 AM	10	6	8	6	11	6	8	6			9	6	15	0.3%
5-6 AM	28	18	25	20	24	19	32	17			27	19	46	0.9%
6-7 AM	134	39	145	43	129	39	138	40			137	40	177	3.5%
7-8 AM	294	17	298	20	315	13	307	15			304	16	320	6.3%
8-9 AM	344	27	381	19	363	16	380	27			367	22	389	7.7%
9-10 AM	304	32	327	41	245	31	317	30			298	34	332	6.6%
10-11 AM	250	40	282	42	277	40	293	46			276	42	318	6.3%
11-12 PM	298	62	286	46	300	43	301	51			296	51	347	6.9%
12-1 PM	302	41	321	41	309	46	313	47			311	44	355	7.0%
1-2 PM	324	57	301	56	306	35	297	62			307	53	360	7.1%
2-3 PM	337	57	336	46	309	66	362	47			336	54	390	7.7%
3-4 PM	347	33	351	55	386	41	385	40			367	42	410	8.1%
4-5 PM	359	35	335	23	387	40	386	27			367	31	398	7.9%
5-6 PM	273	36	325	47	312	48	310	26			305	39	344	6.8%
6-7 PM	189	62	159	37	184	35	200	54			183	47	230	4.6%
7-8 PM	143	32	155	38	167	44	137	38			151	38	189	3.7%
8-9 PM	92	37	110	42	94	34	116	32			103	36	139	2.8%
9-10 PM	71	25	65	21	77	31	81	32			74	27	101	2.0%
10-11 PM	49	17	47	19	51	23	54	26			50	21	72	1.4%
11-12 AM	32	18	31	10	25	14	27	23			29	16	45	0.9%
<b>LANES</b>	<b>4220</b>	<b>707</b>	<b>4330</b>	<b>695</b>	<b>4316</b>	<b>695</b>	<b>4480</b>	<b>716</b>			<b>4337</b>	<b>703</b>	<b>5040</b>	<b>100.0%</b>
<b>TOTAL</b>	<b>4927</b>		<b>5025</b>		<b>5011</b>		<b>5196</b>				<b>5040</b>			
	MON		TUE		WED		THURS		FRI		WK AVG			

PEAK HOUR					TOTAL VEHICALS-PEAK PERIODS		2 HOUR PEAK INTERVALS					
MAX. 7 - 9 am PEAK HOUR	389	⇒	7.7%	between	8-9 AM	2153	⇒	6 HR TOTAL	<b>2 HR AM (7 - 9 AM)</b>			
MAX. 7 - 11 am PEAK HOUR	389	⇒	7.7%	between	8-9 AM	1451	⇒	4 HR TOTAL	VEH / HR	VEH / 2HR	2 HR %	
									7-8 AM	320	709	14.1%
									8-9 AM	389		
MAX. 11 am - 1 pm PEAK HOUR	355	⇒	7.0%	between	12-1 PM	<b>24 HOUR FACTORS</b>						
MAX. 11 am - 3 pm PEAK HOUR	390	⇒	7.7%	between	2-3 PM							
MAX. 4 - 6 pm PEAK HOUR	398	⇒	7.9%	between	4-5 PM	2.34	⇒	6-24 HR FACT.	<b>2 HR NOON (11 - 1 PM)</b>			
MAX. 3 - 6 pm PEAK HOUR	410	⇒	8.1%	between	3-4 PM	3.47	⇒	4-24 HR FACT.	VEH / HR	VEH / 2HR	2 HR %	
									11-12 PM	347	702	13.9%
									12-1 PM	355		
									<b>2 HR PM (4 - 6 PM)</b>			
									VEH / HR	VEH / 2HR	2 HR %	
									4-5 PM	398	742	14.7%
									5-6 PM	344		

# Cedar Hill Cross Rd between McKenzie Ave and Reynolds Rd

Westbound

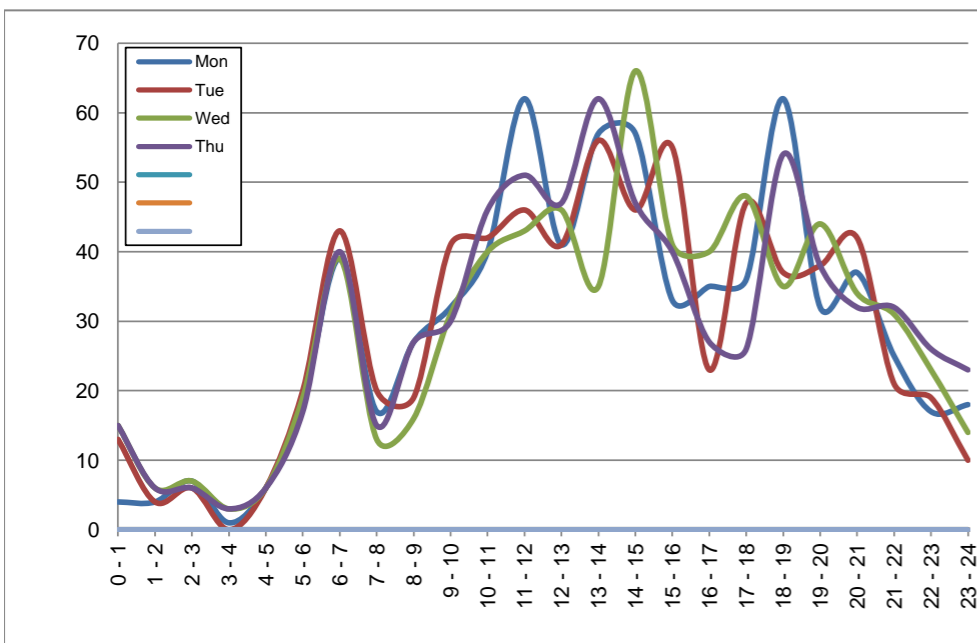
November 23, 2020 to November 26, 2020

## Hourly Volumes

Time Period	Mon	Tue	Wed	Thu			
	Nov 23	Nov 24	Nov 25	Nov 26			
0 - 1	4	13	15	15			
1 - 2	4	4	6	6			
2 - 3	7	6	7	6			
3 - 4	1	0	3	3			
4 - 5	6	6	6	6			
5 - 6	18	20	19	17			
6 - 7	39	43	39	40			
7 - 8	17	20	13	15			
8 - 9	27	19	16	27			
9 - 10	32	41	31	30			
10 - 11	40	42	40	46			
11 - 12	62	46	43	51			
12 - 13	41	41	46	47			
13 - 14	57	56	35	62			
14 - 15	57	46	66	47			
15 - 16	33	55	41	40			
16 - 17	35	23	40	27			
17 - 18	36	47	48	26			
18 - 19	62	37	35	54			
19 - 20	32	38	44	38			
20 - 21	37	42	34	32			
21 - 22	25	21	31	32			
22 - 23	17	19	23	26			
23 - 24	18	10	14	23			
<b>Day Total</b>	<b>707</b>	<b>695</b>	<b>695</b>	<b>716</b>			

## 15-Minute Volumes

Time Start	Mon	Tue	Wed	Thu			
	Nov 23	Nov 24	Nov 25	Nov 26			
0:00	0	5	2	4			
0:15	2	1	5	1			
0:30	1	0	1	1			
0:45	1	7	7	9			
1:00	3	2	3	2			
1:15	0	1	1	3			
1:30	1	0	2	0			
1:45	0	1	0	1			
2:00	0	2	2	1			
2:15	5	2	4	3			
2:30	1	1	1	1			
2:45	1	1	0	1			
3:00	0	0	1	0			
3:15	0	0	0	2			
3:30	0	0	2	1			
3:45	1	0	0	0			
4:00	1	1	1	0			
4:15	1	2	2	1			
4:30	2	2	0	2			
4:45	2	1	3	3			
5:00	3	2	5	3			
5:15	3	2	5	5			
5:30	7	6	3	3			
5:45	5	10	6	6			
6:00	5	11	8	6			
6:15	8	13	11	7			
6:30	13	9	11	15			
6:45	13	10	9	12			
7:00	6	6	3	4			
7:15	3	4	1	2			
7:30	6	4	4	4			
7:45	2	6	5	5			
8:00	5	3	4	6			
8:15	9	6	2	5			
8:30	5	5	4	6			
8:45	8	5	6	10			
9:00	14	10	11	12			
9:15	5	14	8	6			
9:30	5	11	7	4			
9:45	8	6	5	8			
10:00	8	12	13	7			
10:15	6	16	6	14			
10:30	13	7	11	14			
10:45	13	7	10	11			
11:00	13	14	12	9			
11:15	18	14	6	13			
11:30	19	9	14	17			
11:45	12	9	11	12			
12:00	7	11	11	13			
12:15	11	7	16	10			
12:30	13	13	6	9			
12:45	10	10	13	15			
13:00	16	12	10	16			
13:15	12	8	9	19			
13:30	14	21	10	14			
13:45	15	15	6	13			
14:00	14	13	15	9			
14:15	18	10	13	8			
14:30	9	12	24	14			
14:45	16	11	14	16			
15:00	8	12	9	11			
15:15	7	12	11	10			
15:30	10	17	9	10			
15:45	8	14	12	9			
16:00	13	7	9	7			
16:15	7	5	10	7			
16:30	11	5	13	7			
16:45	4	6	8	6			
17:00	9	9	9	5			
17:15	6	14	17	8			
17:30	13	14	11	4			
17:45	8	10	11	9			
18:00	14	14	11	14			
18:15	15	6	5	13			
18:30	17	8	9	14			
18:45	16	9	10	13			
19:00	7	14	15	9			
19:15	10	11	11	10			
19:30	6	3	10	9			
19:45	9	10	8	10			
20:00	7	13	12	8			
20:15	11	11	12	10			
20:30	12	11	6	9			
20:45	7	7	4	5			
21:00	9	7	7	11			
21:15	6	5	10	7			
21:30	3	7	8	9			
21:45	7	2	6	5			
22:00	5	5	8	11			
22:15	3	6	2	5			
22:30	5	5	3	6			
22:45	4	3	10	4			
23:00	6	3	5	10			
23:15	2	2	3	4			
23:30	5	2	1	3			
23:45	5	3	5	6			



Site notes:

# Cedar Hill Cross Rd between McKenzie Ave and Reynolds Rd

Eastbound

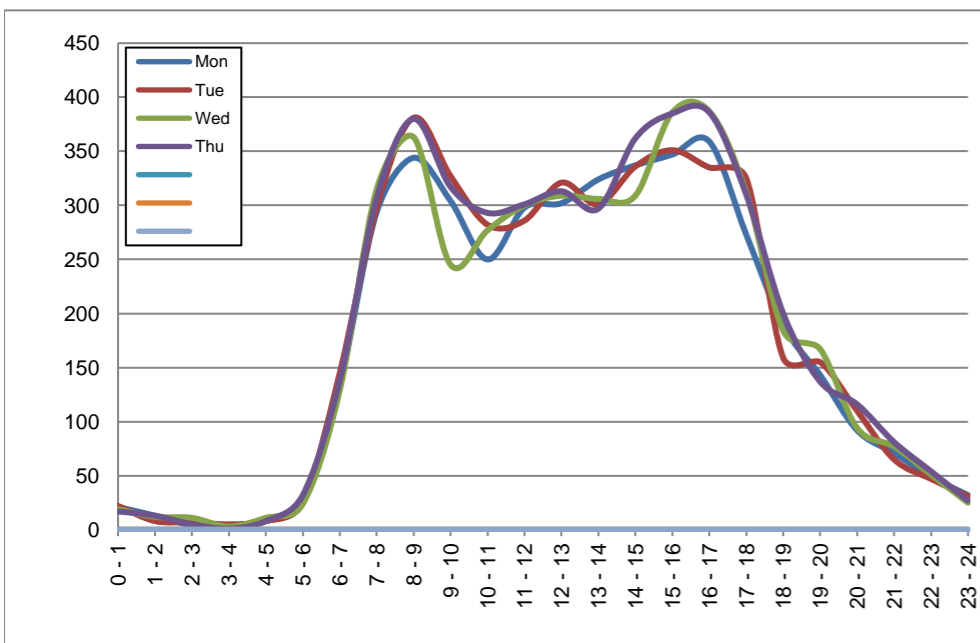
November 23, 2020 to November 26, 2020

## Hourly Volumes

Time Period	Mon	Tue	Wed	Thu			
	Nov 23	Nov 24	Nov 25	Nov 26			
0 - 1	21	22	19	17			
1 - 2	13	8	12	13			
2 - 3	4	7	11	5			
3 - 4	2	5	3	1			
4 - 5	10	8	11	8			
5 - 6	28	25	24	32			
6 - 7	134	145	129	138			
7 - 8	294	298	315	307			
8 - 9	344	381	363	380			
9 - 10	304	327	245	317			
10 - 11	250	282	277	293			
11 - 12	298	286	300	301			
12 - 13	302	321	309	313			
13 - 14	324	301	306	297			
14 - 15	337	336	309	362			
15 - 16	347	351	386	385			
16 - 17	359	335	387	386			
17 - 18	273	325	312	310			
18 - 19	189	159	184	200			
19 - 20	143	155	167	137			
20 - 21	92	110	94	116			
21 - 22	71	65	77	81			
22 - 23	49	47	51	54			
23 - 24	32	31	25	27			
<b>Day Total</b>	<b>4220</b>	<b>4330</b>	<b>4316</b>	<b>4480</b>			

## 15-Minute Volumes

Time Start	Mon	Tue	Wed	Thu				Time Start	Mon	Tue	Wed	Thu			
	Nov 23	Nov 24	Nov 25	Nov 26					Nov 23	Nov 24	Nov 25	Nov 26			
0:00	8	4	8	5				12:00	63	79	74	75			
0:15	5	6	4	5				12:15	77	78	64	81			
0:30	5	6	4	6				12:30	75	88	88	79			
0:45	3	6	3	1				12:45	87	76	83	78			
1:00	6	2	5	4				13:00	71	82	74	87			
1:15	5	1	2	5				13:15	89	68	78	66			
1:30	1	4	3	2				13:30	87	67	89	69			
1:45	1	1	2	2				13:45	77	84	65	75			
2:00	1	1	3	1				14:00	77	79	74	95			
2:15	1	2	5	2				14:15	99	100	71	85			
2:30	2	2	2	1				14:30	84	81	88	101			
2:45	0	2	1	1				14:45	77	76	76	81			
3:00	0	1	1	0				15:00	84	88	99	89			
3:15	0	1	0	0				15:15	87	90	94	104			
3:30	2	3	2	1				15:30	90	78	86	91			
3:45	0	0	0	0				15:45	86	95	107	101			
4:00	1	1	0	2				16:00	106	100	92	108			
4:15	2	1	4	1				16:15	77	87	101	91			
4:30	1	3	2	1				16:30	84	76	96	112			
4:45	6	3	5	4				16:45	92	72	98	75			
5:00	1	1	1	3				17:00	92	97	93	85			
5:15	4	6	4	8				17:15	67	95	91	97			
5:30	10	4	9	11				17:30	68	77	71	69			
5:45	13	14	10	10				17:45	46	56	57	59			
6:00	15	18	24	13				18:00	43	32	40	49			
6:15	24	40	24	32				18:15	49	53	49	55			
6:30	47	33	32	35				18:30	48	31	50	45			
6:45	48	54	49	58				18:45	49	43	45	51			
7:00	56	51	54	52				19:00	38	37	54	33			
7:15	61	76	85	74				19:15	31	49	43	41			
7:30	93	82	91	76				19:30	33	31	32	34			
7:45	84	89	85	105				19:45	41	38	38	29			
8:00	87	87	99	104				20:00	24	33	17	33			
8:15	96	94	95	96				20:15	17	33	27	32			
8:30	67	91	96	78				20:30	25	14	23	26			
8:45	94	109	73	102				20:45	26	30	27	25			
9:00	81	92	67	84				21:00	31	16	18	13			
9:15	64	88	63	68				21:15	16	19	26	35			
9:30	79	73	58	75				21:30	13	15	14	17			
9:45	80	74	57	90				21:45	11	15	19	16			
10:00	74	61	66	71				22:00	10	7	24	21			
10:15	62	78	60	76				22:15	14	15	9	14			
10:30	54	67	77	78				22:30	8	14	8	8			
10:45	60	76	74	68				22:45	17	11	10	11			
11:00	74	69	71	75				23:00	6	7	10	9			
11:15	76	58	71	79				23:15	9	11	7	11			
11:30	65	71	79	78				23:30	9	6	2	3			
11:45	83	88	79	69				23:45	8	7	6	4			



Site notes:

# Vehicle Speed Summary

Saanich Engineering Department

Count Id: C0012-01

Filename: Cedar Hill Cross Rd between McKenzie Ave and Reynolds Rd-Nov-2020.xlsm

**Location:** Cedar Hill Cross Rd between McKenzie Ave and Reynolds Rd

Note:

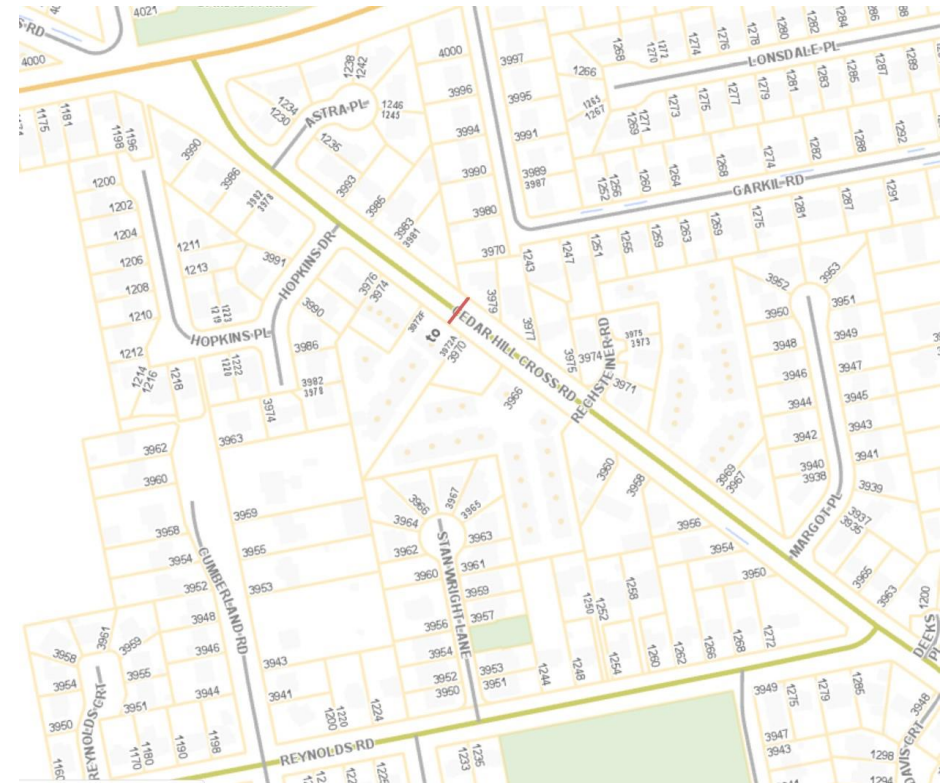
Direction: **East-West**

Dates: **November 22, 2020 To November 27, 2020**

*Filtered data*

AVG. SPEED	<b>30 mph</b>	<b>49 km/h</b>
50 % SPEED	<b>30 mph</b>	<b>49 km/h</b>
85 % SPEED	<b>35 mph</b>	<b>56 km/h</b>
95 % SPEED	<b>38 mph</b>	<b>61 km/h</b>

Location Map



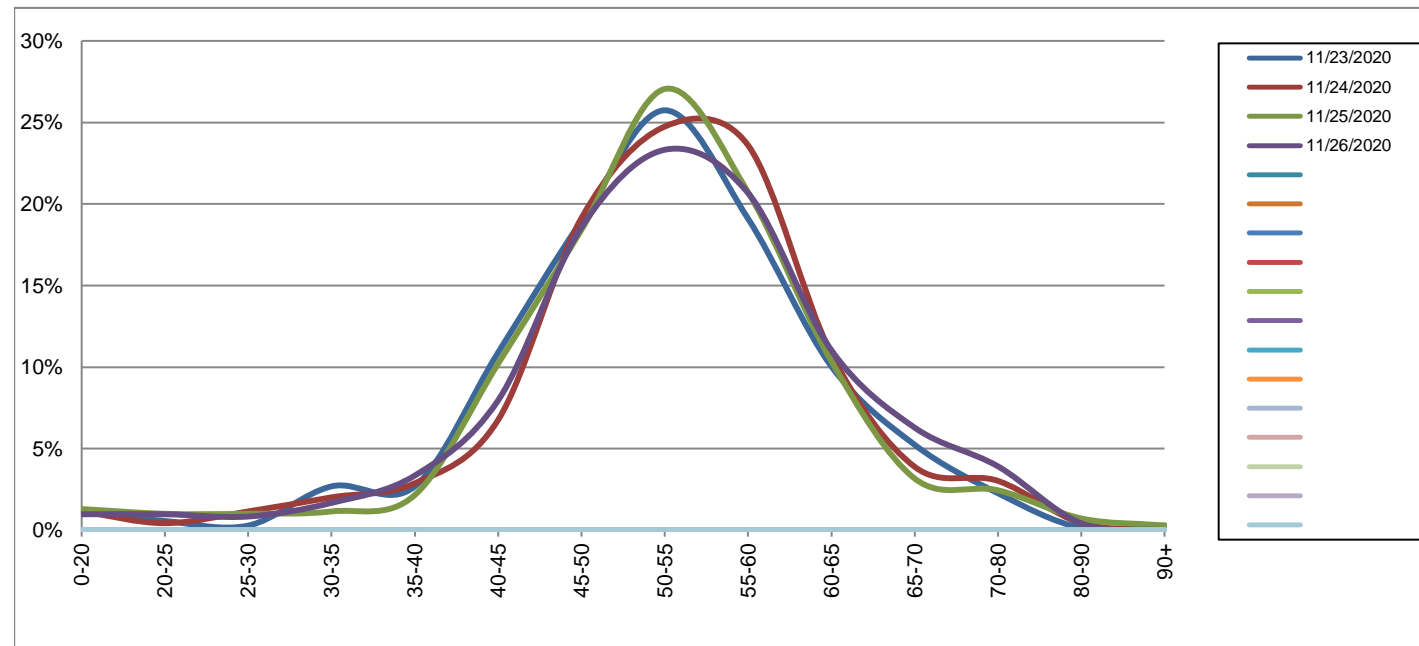
**Cedar Hill Cross Rd between McKenzie Ave and Reynolds Rd**

Westbound  
November 23, 2020 to November 26, 2020

Daily Speed Bin Percentages														Daily Speed Bin Volumes														Total	Avg.	
Bin #	1	2	3	4	5	6	7	8	9	10	11	12	13	14	1	2	3	4	5	6	7	8	9	10	11	12	13	14	Volume	Speed
Bin Speeds	0-20	20-25	25-30	30-35	35-40	40-45	45-50	50-55	55-60	60-65	65-70	70-80	80-90	90+	0-20	20-25	25-30	30-35	35-40	40-45	45-50	50-55	55-60	60-65	65-70	70-80	80-90	90+		
11/23/2020	1.1%	0.6%	0.3%	2.7%	2.7%	10.9%	19.0%	25.7%	19.1%	10.0%	5.2%	2.3%	0.1%	0.3%	8	4	2	19	19	77	134	182	135	71	37	16	1	2	707	52
11/24/2020	1.2%	0.4%	1.2%	2.0%	2.9%	6.8%	19.1%	24.7%	23.6%	10.8%	3.9%	3.0%	0.4%	0.0%	8	3	8	14	20	47	133	172	164	75	27	21	3	0	695	53
11/25/2020	1.3%	1.0%	1.0%	1.2%	2.2%	10.2%	18.4%	27.1%	20.7%	10.4%	3.2%	2.4%	0.7%	0.3%	9	7	7	8	15	71	128	188	144	72	22	17	5	2	695	52
11/26/2020	1.0%	1.0%	0.8%	1.7%	3.4%	8.0%	18.6%	23.3%	20.7%	11.0%	6.3%	3.9%	0.4%	0.0%	7	7	6	12	24	57	133	167	148	79	45	28	3	0	716	53
<b>Total</b>	1.1%	0.7%	0.8%	1.9%	2.8%	9.0%	18.8%	25.2%	21.0%	10.6%	4.7%	2.9%	0.4%	0.1%	32	21	23	53	78	252	528	709	591	297	131	82	12	4	2813	53

**Speed Data Summary**

Bin #	1	2	3	4	5	6	7	8	9	10	11	12	13	14	Total
Bin Speeds	0-20	20-25	25-30	30-35	35-40	40-45	45-50	50-55	55-60	60-65	65-70	70-80	80-90	90+	
Survey Total	32	21	23	53	78	252	528	709	591	297	131	82	12	4	2813
% Total	1.1%	0.7%	0.8%	1.9%	2.8%	9.0%	18.8%	25.2%	21.0%	10.6%	4.7%	2.9%	0.4%	0.1%	100%
Accumulated %	1.1%	1.9%	2.7%	4.6%	7.4%	16.3%	35.1%	60.3%	81.3%	91.9%	96.5%	99.4%	99.9%	100%	
Inverse Accum. %	98.9%	98.1%	97.3%	95.4%	92.6%	83.7%	64.9%	39.7%	18.7%	8.1%	3.5%	0.6%	0.1%	0.0%	
Average Speed	53 KM/H														



Site notes:

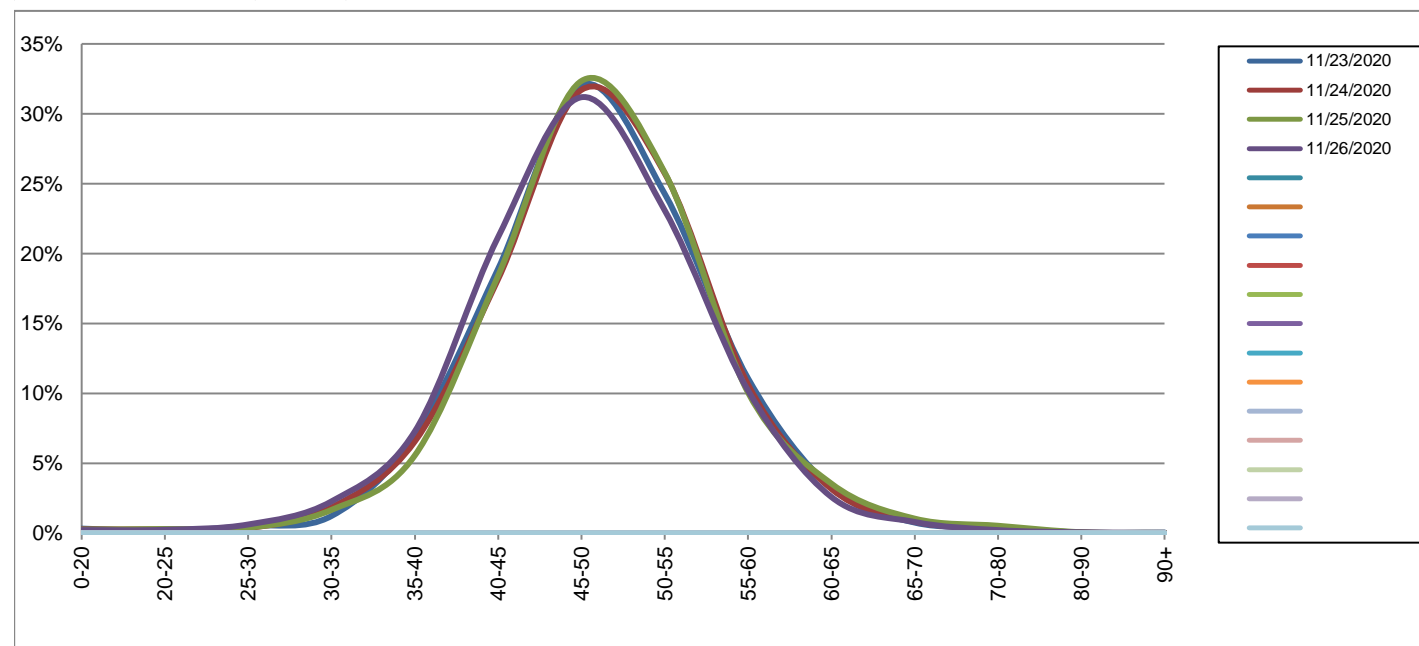
**Cedar Hill Cross Rd between McKenzie Ave and Reynolds Rd**

Eastbound  
November 23, 2020 to November 26, 2020

Daily Speed Bin Percentages															Daily Speed Bin Volumes														Total	Avg. Speed
Bin #	1	2	3	4	5	6	7	8	9	10	11	12	13	14	1	2	3	4	5	6	7	8	9	10	11	12	13	14		
Bin Speeds	0-20	20-25	25-30	30-35	35-40	40-45	45-50	50-55	55-60	60-65	65-70	70-80	80-90	90+	0-20	20-25	25-30	30-35	35-40	40-45	45-50	50-55	55-60	60-65	65-70	70-80	80-90	90+	Volume	Speed
11/23/2020	0.3%	0.2%	0.5%	1.2%	6.9%	18.9%	32.0%	24.3%	11.1%	3.2%	0.8%	0.4%	0.0%	0.0%	14	7	22	52	293	798	1352	1024	467	137	32	18	2	2	4220	49
11/24/2020	0.3%	0.3%	0.4%	1.8%	6.6%	18.2%	31.7%	25.7%	10.6%	3.2%	0.8%	0.4%	0.0%	0.0%	12	12	16	80	284	787	1373	1114	460	137	36	16	2	1	4330	49
11/25/2020	0.3%	0.3%	0.4%	1.7%	5.6%	18.4%	32.3%	25.8%	10.1%	3.5%	1.0%	0.5%	0.1%	0.0%	11	13	17	72	240	795	1396	1113	434	153	45	23	3	1	4316	49
11/26/2020	0.2%	0.2%	0.6%	2.3%	7.3%	21.2%	31.2%	23.1%	10.2%	2.6%	0.8%	0.2%	0.1%	0.0%	10	11	28	102	326	949	1397	1034	457	116	36	10	3	1	4480	48
<b>Total</b>	0.3%	0.2%	0.5%	1.8%	6.6%	19.2%	31.8%	24.7%	10.5%	3.1%	0.9%	0.4%	0.1%	0.0%	47	43	83	306	1143	3329	5518	4285	1818	543	149	67	10	5	17346	48

**Speed Data Summary**

Bin #	1	2	3	4	5	6	7	8	9	10	11	12	13	14	Total
Bin Speeds	0-20	20-25	25-30	30-35	35-40	40-45	45-50	50-55	55-60	60-65	65-70	70-80	80-90	90+	
Survey Total	47	43	83	306	1143	3329	5518	4285	1818	543	149	67	10	5	17346
% Total	0.3%	0.2%	0.5%	1.8%	6.6%	19.2%	31.8%	24.7%	10.5%	3.1%	0.9%	0.4%	0.1%	0.0%	100%
Accumulated %	0.3%	0.5%	1.0%	2.8%	9.4%	28.5%	60.4%	85.1%	95.5%	98.7%	99.5%	99.9%	100.0%	100%	
Inverse Accum. %	99.7%	99.5%	99.0%	97.2%	90.6%	71.5%	39.6%	14.9%	4.5%	1.3%	0.5%	0.1%	0.0%	0.0%	
Average Speed	48 KM/H														



Site notes:

**Cedar Hill Cross Rd between McKenzie Ave and Reynolds Rd**

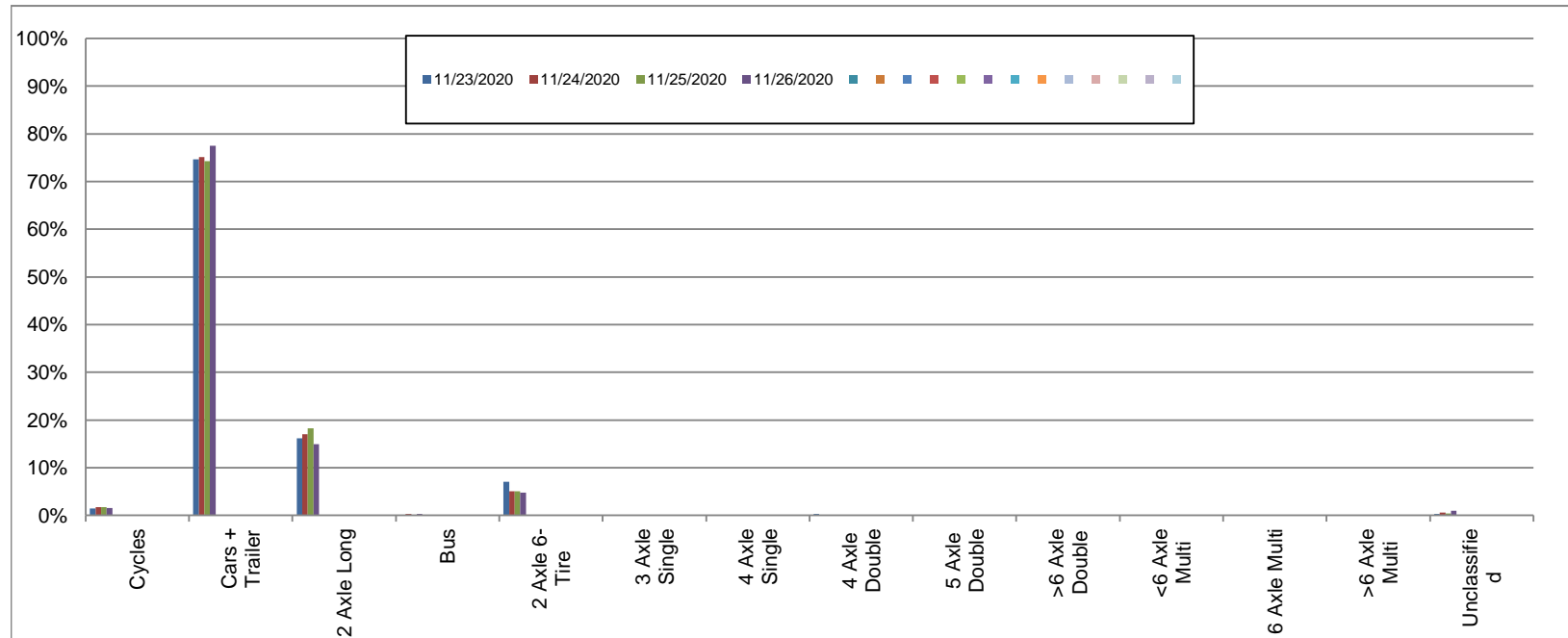
Westbound

November 23, 2020 to November 26, 2020

Daily Class Bin Percentages															Daily Class Bin Volumes															
Bin #	1	2	3	4	5	6	7	8	9	10	11	12	13	14	1	2	3	4	5	6	7	8	9	10	11	12	13	14	Total Volume	
Bin Class	Cycles	Cars + Trailer	2 Axle Long	Bus	2 Axle 6-Tire	3 Axle Single	4 Axle Single	4 Axle Double	5 Axle Double	>6 Axle Double	<6 Axle Multi	6 Axle Multi	>6 Axle Multi	Unclassified	Cycles	Cars + Trailer	2 Axle Long	Bus	2 Axle 6-Tire	3 Axle Single	4 Axle Single	4 Axle Double	5 Axle Double	>6 Axle Double	<6 Axle Multi	6 Axle Multi	>6 Axle Multi	Unclassified		
11/23/2020	1.4%	74.7%	16.1%	0.1%	7.1%	0.0%	0.0%	0.3%	0.0%	0.0%	0.0%	0.0%	0.0%	0.3%	10	528	114	1	50	0	0	2	0	0	0	0	0	0	2	707
11/24/2020	1.7%	75.1%	17.0%	0.3%	5.0%	0.1%	0.0%	0.1%	0.0%	0.0%	0.0%	0.0%	0.0%	0.6%	12	522	118	2	35	1	0	1	0	0	0	0	0	0	4	695
11/25/2020	1.7%	74.2%	18.3%	0.0%	5.0%	0.0%	0.0%	0.1%	0.1%	0.0%	0.0%	0.0%	0.0%	0.4%	12	516	127	0	35	0	0	1	1	0	0	0	0	0	3	695
11/26/2020	1.5%	77.5%	14.9%	0.3%	4.7%	0.0%	0.0%	0.0%	0.0%	0.0%	0.0%	0.0%	0.0%	1.0%	11	555	107	2	34	0	0	0	0	0	0	0	0	0	7	716
<b>Total</b>	1.6%	75.4%	16.6%	0.2%	5.5%	0.0%	0.0%	0.1%	0.0%	0.0%	0.0%	0.0%	0.0%	0.6%	45	2121	466	5	154	1	0	4	1	0	0	0	0	16	2813	

**Class Data Summary**

Bin #	1	2	3	4	5	6	7	8	9	10	11	12	13	14	Total Volume
Bin Class	Cycles	Cars + Trailer	2 Axle Long	Bus	2 Axle 6-Tire	3 Axle Single	4 Axle Single	4 Axle Double	5 Axle Double	>6 Axle Double	<6 Axle Multi	6 Axle Multi	>6 Axle Multi	Unclassified	Total Volume
<b>Survey Total</b>	45	2121	466	5	154	1	0	4	1	0	0	0	0	16	2813
<b>% Total</b>	1.6%	75.4%	16.6%	0.2%	5.5%	0.0%	0.0%	0.1%	0.0%	0.0%	0.0%	0.0%	0.0%	0.6%	100%
<b>Accumulated %</b>	1.6%	77.0%	93.6%	93.7%	99.2%	99.3%	99.3%	99.4%	99.4%	99.4%	99.4%	99.4%	99.4%	100.0%	
<b>Inv. Accum. %</b>	98.4%	23.0%	6.4%	6.3%	0.8%	0.7%	0.7%	0.6%	0.6%	0.6%	0.6%	0.6%	0.6%	0.0%	



**Classification Descriptions**

Bin #	Bin Description
1	Motorcycles
2	Passenger cars, including those with recreational trailers
3	2-axle pick-ups, vans, and RVs, including those with recreational trailers
4	Buses
5	2-axle, 6-tire single units
6	3-axle single units
7	4-axle single units
8	3-axle or 4-axle double unit
9	5-axle double unit
10	6-, 7-, or 8-axle double unit
11	5-axle multiple unit
12	6-axle multiple unit
13	7-or-more-axle multiple unit
14	Vehicles that could not be classified

Site notes:



**Cedar Hill Cross Rd between McKenzie Ave and Reynolds Rd**

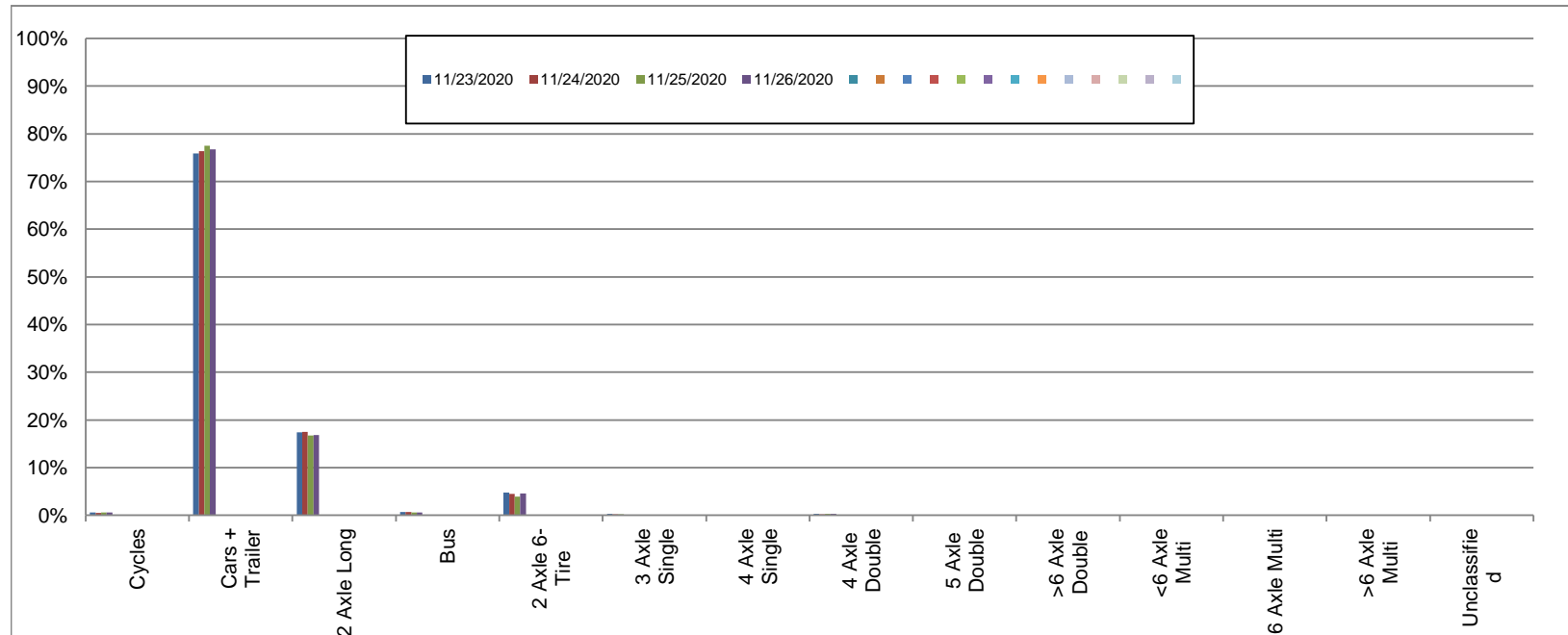
Eastbound

November 23, 2020 to November 26, 2020

Daily Class Bin Percentages															Daily Class Bin Volumes														
Bin #	1	2	3	4	5	6	7	8	9	10	11	12	13	14	1	2	3	4	5	6	7	8	9	10	11	12	13	14	Total Volume
Bin Class	Cycles	Cars + Trailer	2 Axle Long	Bus	2 Axle 6-Tire	3 Axle Single	4 Axle Single	4 Axle Double	5 Axle Double	>6 Axle Double	<6 Axle Multi	6 Axle Multi	>6 Axle Multi	Unclassified	Cycles	Cars + Trailer	2 Axle Long	Bus	2 Axle 6-Tire	3 Axle Single	4 Axle Single	4 Axle Double	5 Axle Double	>6 Axle Double	<6 Axle Multi	6 Axle Multi	>6 Axle Multi	Unclassified	
11/23/2020	0.6%	75.9%	17.4%	0.6%	4.8%	0.3%	0.0%	0.3%	0.0%	0.0%	0.0%	0.0%	0.0%	0.1%	25	3201	736	27	203	11	0	14	0	0	0	0	0	3	4220
11/24/2020	0.5%	76.4%	17.5%	0.6%	4.5%	0.2%	0.0%	0.2%	0.0%	0.0%	0.0%	0.0%	0.0%	0.1%	21	3306	759	28	193	9	0	10	1	0	0	0	0	3	4330
11/25/2020	0.6%	77.5%	16.7%	0.6%	3.9%	0.2%	0.0%	0.3%	0.0%	0.1%	0.0%	0.0%	0.0%	0.1%	25	3347	722	24	169	9	0	13	0	4	0	0	0	3	4316
11/26/2020	0.6%	76.8%	16.8%	0.6%	4.6%	0.2%	0.0%	0.3%	0.0%	0.0%	0.0%	0.0%	0.0%	0.1%	26	3440	753	27	206	7	2	15	0	0	0	0	0	4	4480
<b>Total</b>	0.6%	76.6%	17.1%	0.6%	4.4%	0.2%	0.0%	0.3%	0.0%	0.0%	0.0%	0.0%	0.0%	0.1%	97	13294	2970	106	771	36	2	52	1	4	0	0	0	13	17346

**Class Data Summary**

Bin #	1	2	3	4	5	6	7	8	9	10	11	12	13	14	Total Volume
Bin Class	Cycles	Cars + Trailer	2 Axle Long	Bus	2 Axle 6-Tire	3 Axle Single	4 Axle Single	4 Axle Double	5 Axle Double	>6 Axle Double	<6 Axle Multi	6 Axle Multi	>6 Axle Multi	Unclassified	Total Volume
<b>Survey Total</b>	97	13294	2970	106	771	36	2	52	1	4	0	0	0	13	17346
<b>% Total</b>	0.6%	76.6%	17.1%	0.6%	4.4%	0.2%	0.0%	0.3%	0.0%	0.0%	0.0%	0.0%	0.0%	0.1%	100%
<b>Accumulated %</b>	0.6%	77.2%	94.3%	94.9%	99.4%	99.6%	99.6%	99.9%	99.9%	99.9%	99.9%	99.9%	99.9%	100.0%	
<b>Inv. Accum. %</b>	99.4%	22.8%	5.7%	5.1%	0.6%	0.4%	0.4%	0.1%	0.1%	0.1%	0.1%	0.1%	0.0%		



**Classification Descriptions**

Bin #	Bin Description
1	Motorcycles
2	Passenger cars, including those with recreational trailers
3	2-axle pick-ups, vans, and RVs, including those with recreational trailers
4	Buses
5	2-axle, 6-tire single units
6	3-axle single units
7	4-axle single units
8	3-axle or 4-axle double unit
9	5-axle double unit
10	6-, 7-, or 8-axle double unit
11	5-axle multiple unit
12	6-axle multiple unit
13	7-or-more-axle multiple unit
14	Vehicles that could not be classified

Site notes: